

## REGULATIONS

- All rules and regulations of the State of Montana and the Gallatin National Forest apply. It is your responsibility to know the rules. The following are briefly summarized for your convenience:
- A current Montana OHV decal or a Non-Resident Temporary Use Decal is required for riding on trails. A license plate is required for use on public roads.
- OHV travel is allowed only on designated roads and trails shown on this map. Please do not leave these designated roads and trails or their adjacent parking lots on your OHV.

## SAFETY

- Make sure your OHV is in good operating condition and has sufficient fuel.
- Always wear a helmet, eye protection, gloves, and heavy boots when riding your OHV.
- With the exception of the Daisy and Lulu Pass roads and the Upper “cut-across” road, most of the OHV roads and trails on this map are extremely rough. Know your limitations.
- Always let someone know where you are going and when you expect to return. Avoid traveling alone.
- Carry water, rain gear, a warm jacket and survival gear. This area is remote and weather conditions can change rapidly.
- Watch for wildlife. This is grizzly country!

## COURTESY AND APPROPRIATE USE

- Be considerate of others using these trails. Trails are shared with hikers, back-packers, horses, mountain bikers, moose, and bears. Yield the right of way whenever possible.
- Move to the side and shut off your engine when meeting on-coming horses. When approaching horses from the rear, wait until they have moved to the side and stopped before cautiously proceeding.
- Leave no trash; pick up any you find.
- Do not ride off the designated trail, take short cuts, or ride into meadows or around lakes.
- This is high country and recovery from off-trail abuse takes decades.
- When riding through populated areas, slow down for safety and to reduce noise and dust.
- Most of all, enjoy this wild and beautiful country and help ensure that it remains so.



<https://fwp.mt.gov/stateparks>



**The Beartooth Alliance**

Cooke City, MT

# Off Highway Vehicle Guide

to the Cooke City, MT area

*Jeep/ATV/Dirt Bike roads & trails  
usage map*



*courtesy of*

**The Beartooth Alliance**

*bringing people who love this region together to  
enhance our unique mountain environment*

<https://northernplains.org/affiliates/beartooth-alliance/>





The network of OHV roads and trails on this map provide opportunities for outdoor recreation not found elsewhere. These roads and trails provide access to lakes, a historic mining district, a ghost town, breath-taking scenery, and numerous hiking trails.

Much of the area you will be traveling is part of a large reclamation project designed to repair damage to the land and water caused by historic mining activity. Please be respectful of reclamation and stay on designated trails.

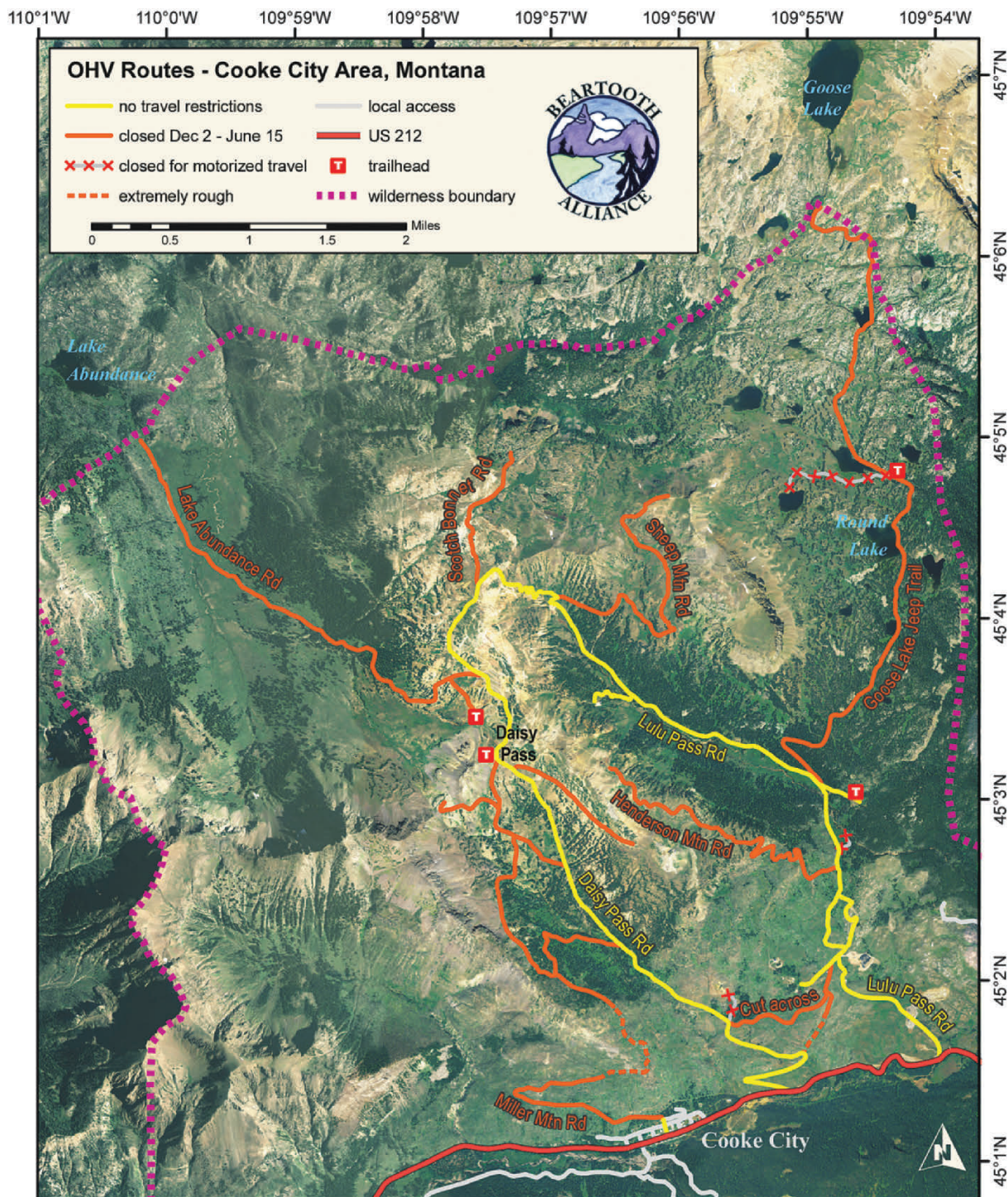
The map on this brochure shows the location of OHV roads and trails. Motorized travel on any trail not highlighted on this map is prohibited and subject to fine. A "Cooke City" USGS quadrangle map is recommended. Know where you are going before you leave and let someone know your intended destination. Enjoy!

### FISHING

Take your rod and reel (and of course your Montana Fishing License). These trails provide close access to numerous lakes containing native cutthroat, brook, and lake trout. Lakes along the routes include: Abundance, Round, Ovis, Mutt & Jeff, Long, Star, and Goose.

### PHOTOGRAPHY

Opportunities abound! Wild flowers, scenic vistas, animals, and historic ruins are all awaiting your creativity!



Sources: National Resource Information System at <http://nris.mt.gov/gis/> and Gallatin National Forest Travel Plan, 2007